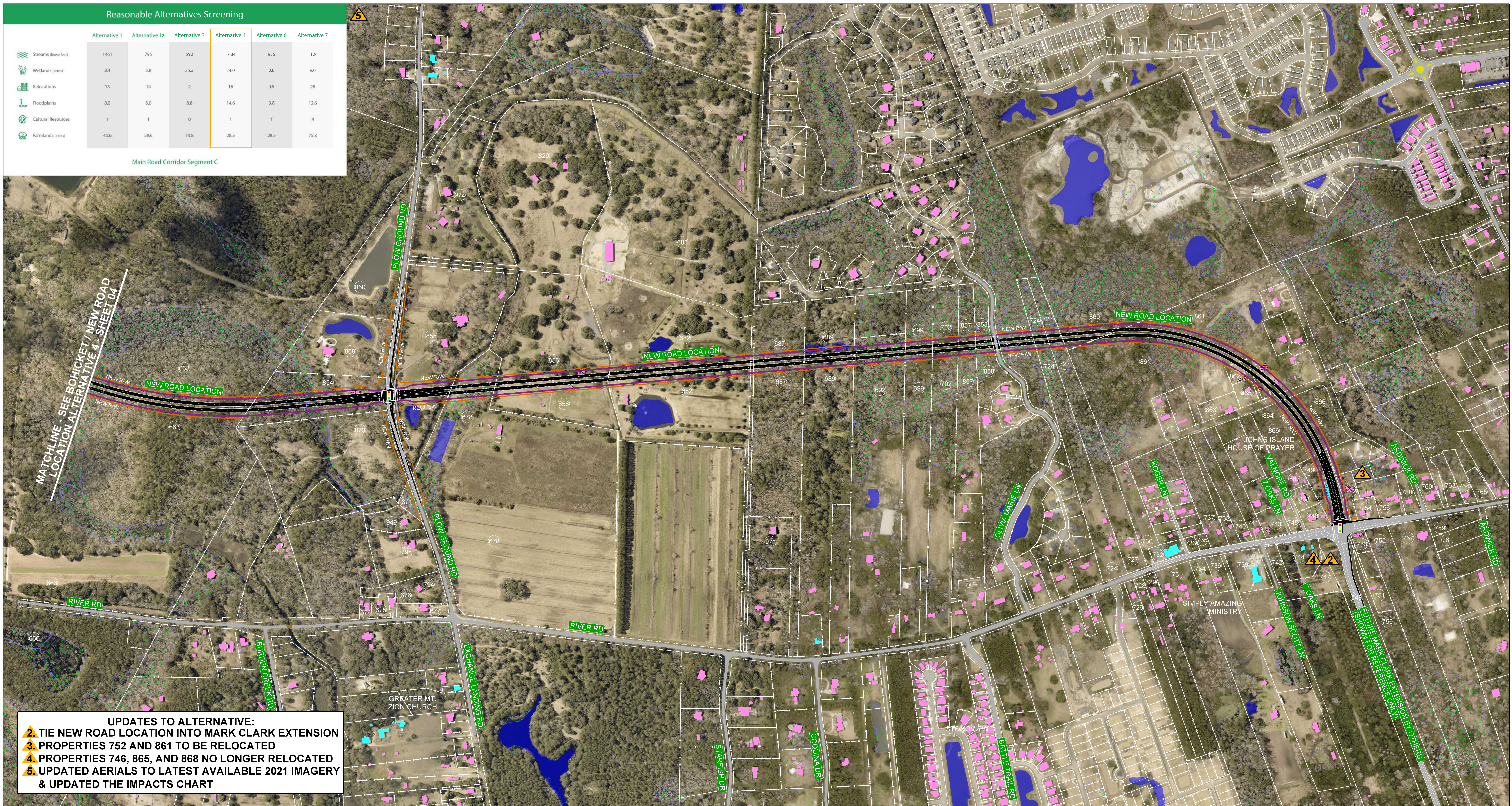


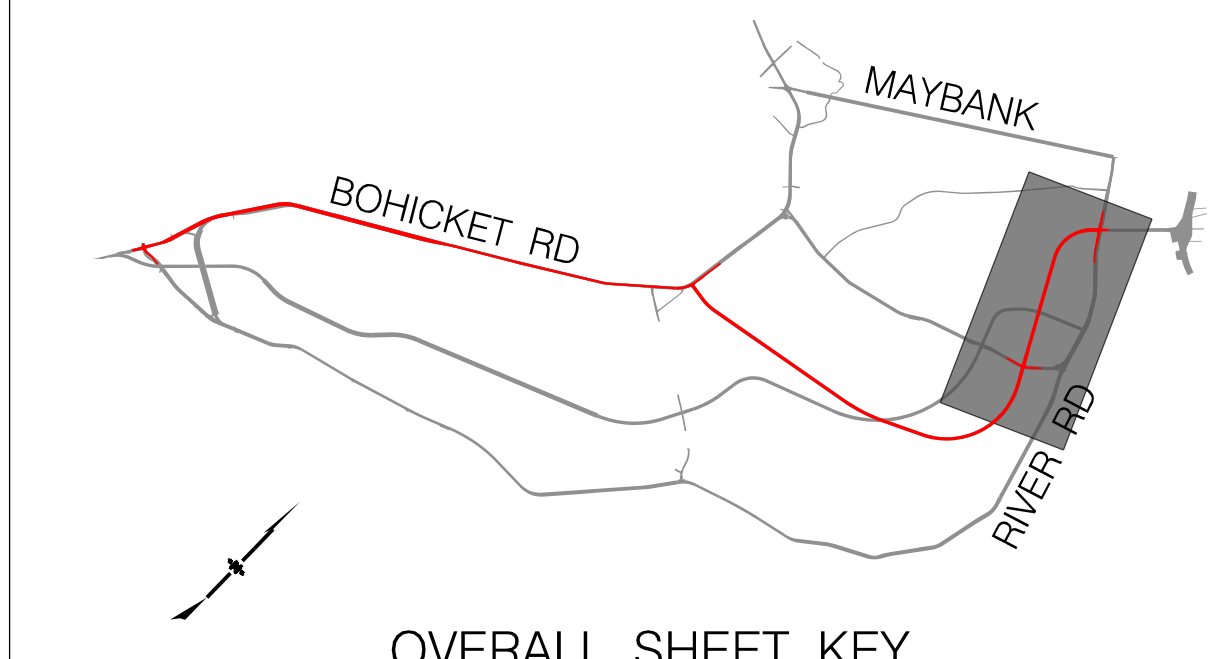
Reasonable Alternatives Screening

	Alternative 1	Alternative 1a	Alternative 3	Alternative 4	Alternative 6	Alternative 7
Streams (linear feet)	1461	795	590	1484	935	1124
Wetlands (acres)	8.4	5.8	35.3	34.0	3.8	9.0
Relocations	18	14	2	16	16	28
Floodplains	8.0	8.0	8.8	14.6	3.8	12.6
Cultural Resources	1	1	0	1	1	4
Farmlands (acres)	40.6	29.6	79.8	28.5	28.5	75.3

Main Road Corridor Segment C

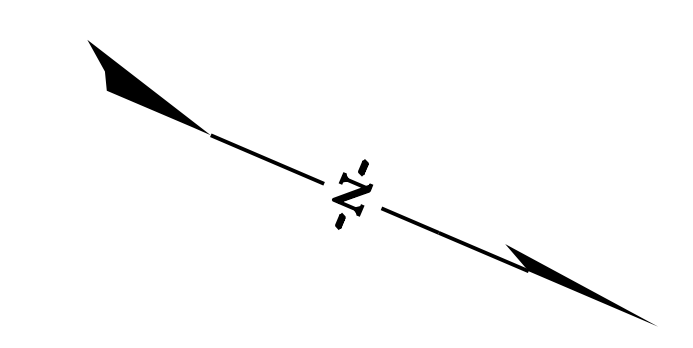
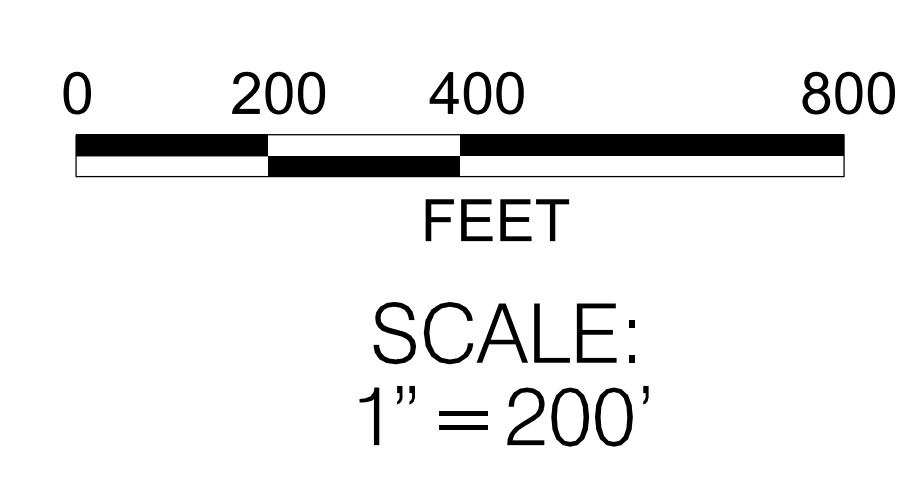


UPDATES TO ALTERNATIVE:
 2. TIE NEW ROAD LOCATION INTO MARK CLARK EXTENSION
 3. PROPERTIES 752 AND 861 TO BE RELOCATED
 4. PROPERTIES 746, 865, AND 868 NO LONGER RELOCATED
 5. UPDATED AERIALS TO LATEST AVAILABLE 2021 IMAGERY & UPDATED THE IMPACTS CHART



LEGEND

EXISTING ROADWAY	PROPOSED NEW ROADWAY	EXISTING BRIDGE	PROPOSED NEW BRIDGE	PROPOSED 12' SHARED-USE PATH	EXISTING MEDIAN	PROPOSED MEDIAN
TRAFFIC SIGNAL	REMOVAL OF EX. ROADWAY	RESIDENTIAL BUILDINGS	COMMERCIAL BUILDINGS	WATER	WETLANDS BOUNDARY	POTENTIAL RIGHT-OF-WAY (NEW R/W)
POTENTIAL RELOCATIONS (RESIDENTIAL)	POTENTIAL RELOCATIONS (COMMERCIAL)					



**MAIN ROAD SEGMENT C
 BOHICKET / NEW ROAD LOCATION
 ALTERNATIVE 4 - SHEET 05
 CHARLESTON COUNTY, SC**